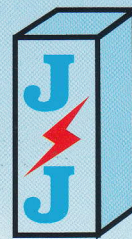


# J. J. ELECTROFAB (INDIA) PVT. LTD.



**TYPE TESTED  
AT CPRI**

**IP 65  
TESTED**

**SHORT CIRCUIT  
TESTED AT CPRI**



**A HITECH PARK OF SWITCH BOARDS  
AND ENCLOSURERS**



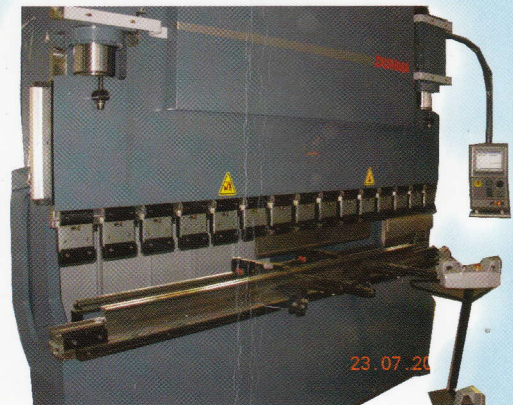
# State Of The Art Machineries



CNC Punching - AE 2510 NT - AMADA Make ( JAPAN )



CNC Shearing TRIMAN Make



CNC Press Brake 135T,  
DURMA Make( TURKEY )



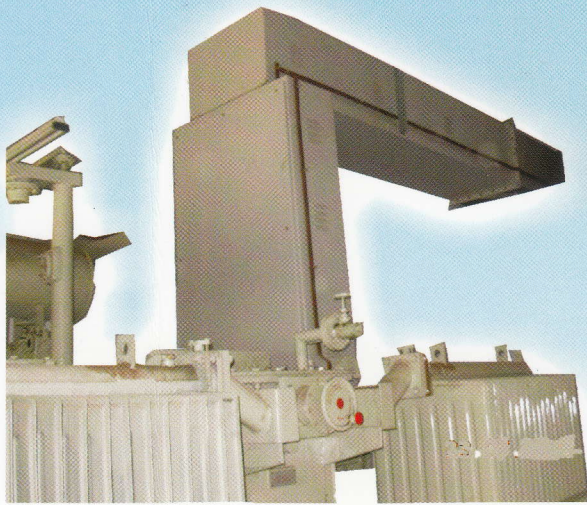
RG 80 Press Brake  
AMADA Make ( JAPAN )



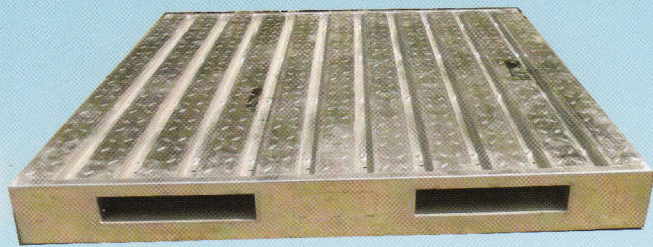
RG 35 Press Brake  
AMADA Make ( JAPAN )



# Superior Quality Products.



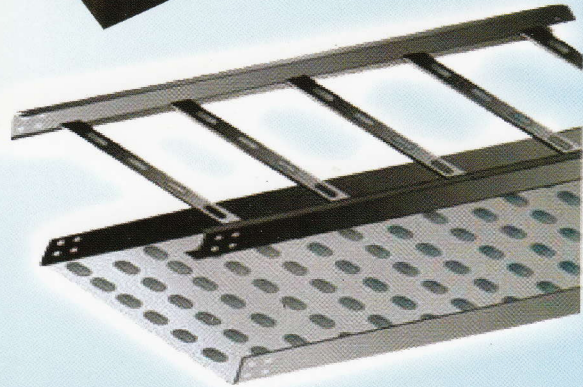
**Bus Duct**



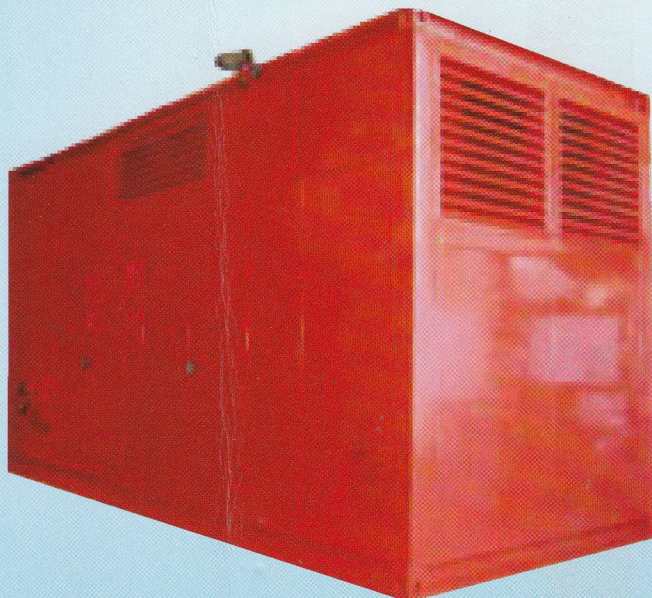
**Metal Pallet**



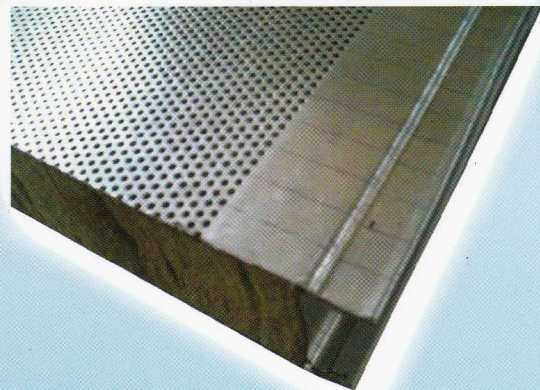
**E- House**



**Perforated / Welded Cable Tray**



**Acoustic Enclosure**



**Acoustic Panel**



## **WELDING SHOP**

Argon Welding Machines for SS Welding.

AC/DC Inverter Machines for Aluminum Welding.

Mig / Co2 welding Machines 400 Amps.

Mig / Co2 welding Machines 250 Amps.

Inverter Arc Welding Machines 200 Amp & 300Amp.

Stud welding Machine - Capacity m 8.

Spot welding Machine - Throat depth 750mm, Capacity 2/2mm.

## **POWDER COATING / PAINTING SHOP**

Huge Size Oven to accommodate biggest welded frame.

Conveyorised Back to back booth.

## **Metal Pretreatment System.**

Our Metal pretreatment system eight tank zinc phosphating system.

The time is based on room temperature.

Founded in 1996 **JJ ELECTROFAB (INDIA) PVT. LTD.** is today  
One of the leading & Biggest manufacturer of custom built Electrical  
Control Panels & Enclosures.

Works Land Area : 51, 000 Sq. ft.

Works Built Up Area : 30,000 Sq. ft

## **CERTIFICATIONS & APPROVALS**

Our Panels are TYPE TESTED as per IEC:61439-1 at CPRI – Bhopal  
wide report No.CPRIBPLSTNB1819T0243 Dtd.10/10/2018.

Our Panels are short-circuit withstand strength tested for 415V, 5000  
Amps rating of 65kA rms for 1.0 second with initial peak of 143 Ka  
at CPRI – Bhopal wide report No. S2161114 dtd. Oct 3<sup>rd</sup> 2016.

Our Panels are Temperature-rise tested for 415V, 3200Amps rating at  
ERDA – Baroda wide report No. RP-1617-033506 dtd. Oct 10<sup>th</sup> 2016.

Our Enclosures are IP 65 tested as per IS 13947 from IDEMI  
( A Govt. of India society ). Test for IP:6x - Ingress of dust for  
enclosure of category I. Test for. IP:X5 - Protection against water jet  
wide certificate No. CT/PCI/0635/08-09 Dtd. 07.07.2008.

In Electrical Control Panel field we are experts for all  
Types of Panels catering into every sector of Industries.

## **ENCLOSURE PRODCUT RANGE**

Enclosure Welded Frame (WF)

Wall Mounting Box (WMB)

Terminal Box (TB)

Pendant, Control desk, Consoles Bolted Panels.

For Standard Sizes Visit : [www.jjelectrofab.com](http://www.jjelectrofab.com)



## **OUR ACTIVITIES**

- Electrical Control Panels & Busducts.
- Power Control Centre - PCC Panels.
- Motor Control Centre - MCC Panels.
- Distribution Boards & Lighting Panels.
- VFD Panels, PLC Panels, Relay Panels.
- SOFT Starters, Crane Control Panels.
- Automatic Power Factor Control Panels(APFC).
- Auto Main Failure (AMF) Panel & ATS Panel.
- Automation Enclosures & Electronic Racks.
- MS, SS & Aluminium Boxes.
- Pendant, Control Desk, Consoles, Bolted Panels.
- Acoustic Enclosure for DG Set / Compressor.
- Acoustic Panels / Rooms.
- Cable Trays, Gratings.
- Sheet Steel Fabricated Pallets.
- E - Houses.
- Sheet Metal Fabrication with CNC Back Up.
- CNC Punching, CNC Shearing & Bending.
- Liquid Painting & Powder Coating.

**For further enquiries and clarifications please  
log on to [www.jjelectrofab.com](http://www.jjelectrofab.com)**



**JOSEPH GEORGE - Managing Director**

Tel.: +91-27606669 / 27412100

Cell : +91 - 9820134 913

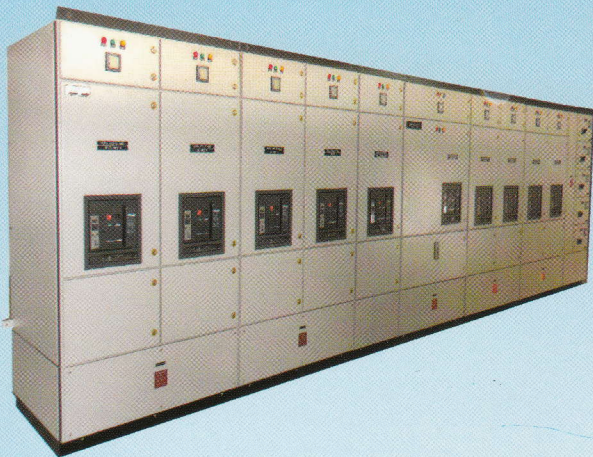
ELECTRICAL CONTROL PANELS & BUSDUCTS,  
AUTOMATION ENCLOSURES & ACOUSTIC ENCLOSURES,  
E-HOUSES, SHELTER / PORTA CABINS,  
SHEET METAL FABRICATION WITH CNC BACKUP,  
POWDER COATING & OVEN BAKED PAINTING.



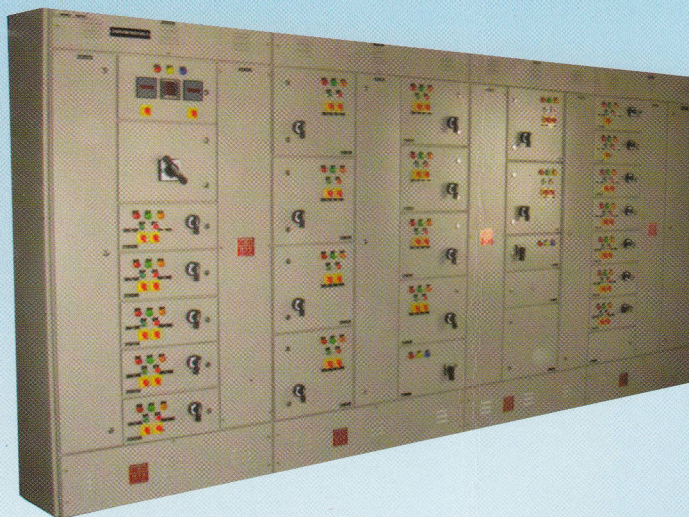
**J. J. ELECTROFAB (INDIA) PVT. LTD.**

PLOT NO. D-1, MIDC, TALOJA, NAVI MUMBAI  
PIN - 410 208, MAHARASHTRA, INDIA.  
E-mail : [sales@jjelectrofab.com](mailto:sales@jjelectrofab.com)  
Web.: [www.jjelectrofab.com](http://www.jjelectrofab.com)

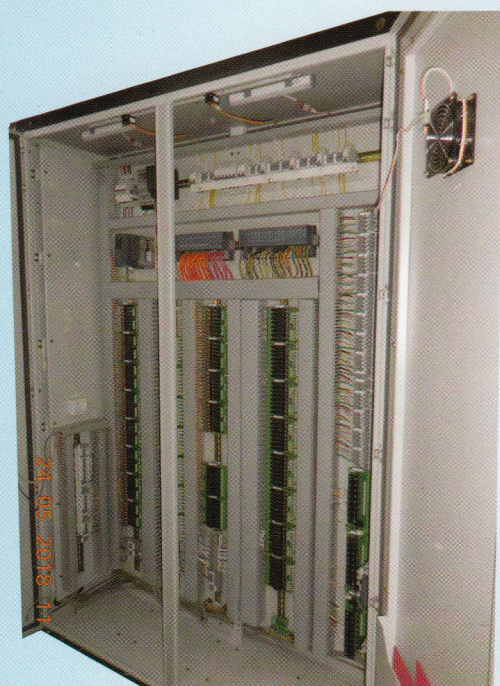




**Main PCC Panel**



**MCC Panel**



**PLC Panel**



**VFD Panel**

## **J.J.ELECTROFAB (INDIA) PVT. LTD.**

### **Marketing Office**

Plot No. R-885, M.I.D.C., Rabale,  
Navi Mumbai - 400 701. India.  
TeleFax.: 91-22-27641236 / 27606669  
Mob.: 9004065788 / 7506758155

### **Regd. Off & Works**

Plot No. D-1, M.I.D.C., Taloja,  
Navi Mumbai - 410 208. India.  
TeleFax.: 91-22-27402472 / 27412100  
Mob.: 7208939348 / 9987386940

Email : [sales@jjelectrofab.com](mailto:sales@jjelectrofab.com) / [marketing@jjelectrofab.com](mailto:marketing@jjelectrofab.com)  
Web : [www.jjelectrofab.com](http://www.jjelectrofab.com)